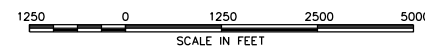
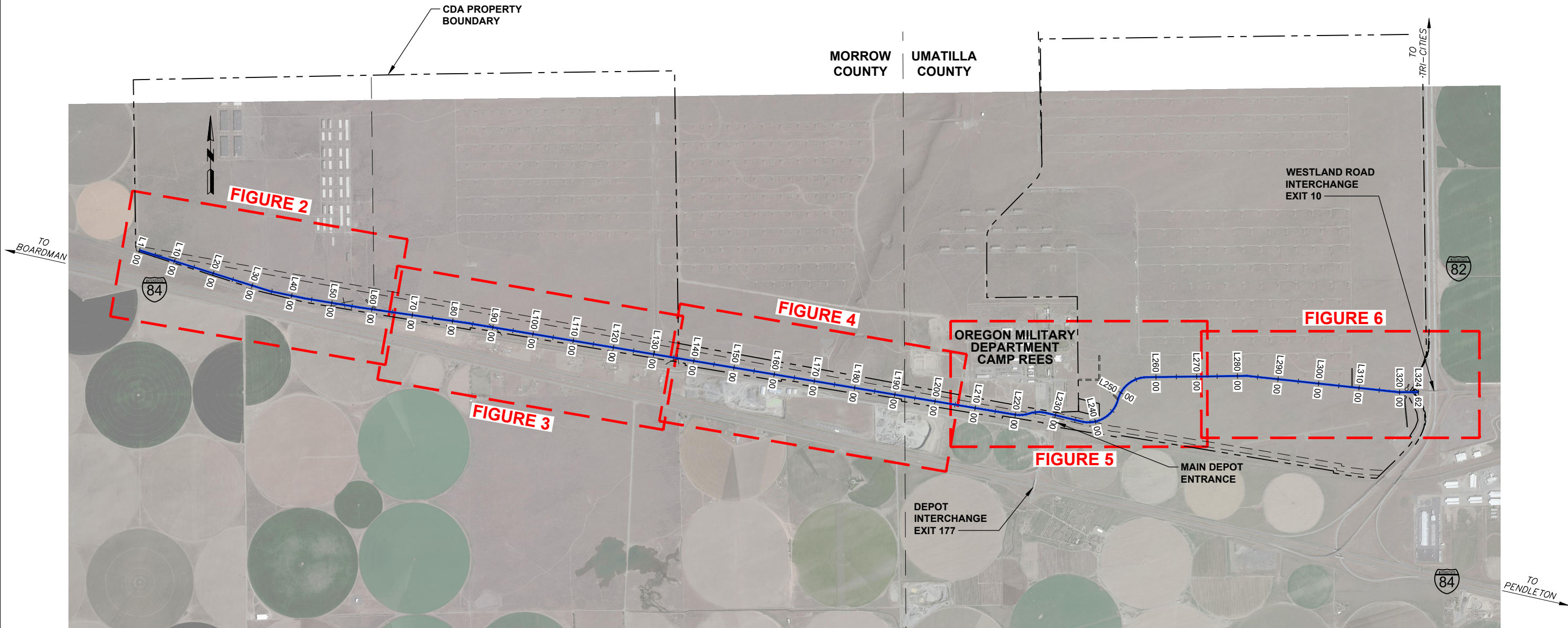
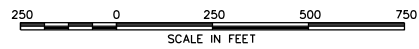


X:\Clients\Columbia Devlp Authority\98-02 Industrial Area Connector\CAD\98-02-FIG-1.dwg\_Layout1\_12/11/2023 8:56 AM\_Imurphy



	<b>COLUMBIA DEVELOPMENT AUTHORITY INDUSTRIAL AREA CONNECTOR ROAD PRE-DESIGN REPORT</b>	<b>FIGURE 1</b>
	<b>PRELIMINARY ROADWAY ALIGNMENT SHEET INDEX</b>	

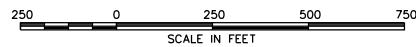
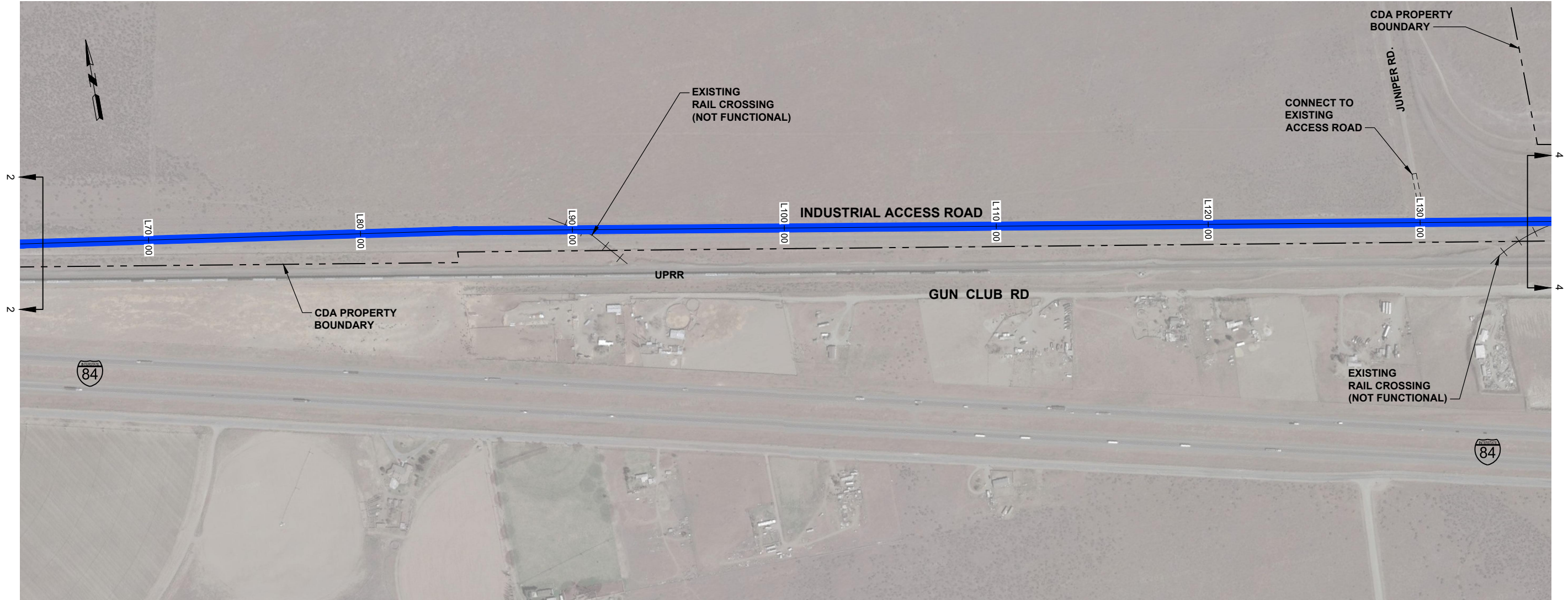


**COLUMBIA DEVELOPMENT AUTHORITY  
INDUSTRIAL AREA CONNECTOR ROAD  
PRE-DESIGN REPORT**

**PRELIMINARY ROADWAY ALIGNMENT  
STA L1+00 TO STA L65+00**

**FIGURE  
2**

X:\Clients\Columbia Devlp Authority\98-02 Industrial Area Connector\CAD\98-02-FIG-3.dwg\_Layout1\_12/11/2023 8:56 AM\_Imurphy

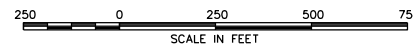


**COLUMBIA DEVELOPMENT AUTHORITY  
INDUSTRIAL AREA CONNECTOR ROAD  
PRE-DESIGN REPORT**

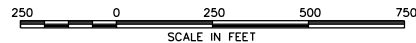
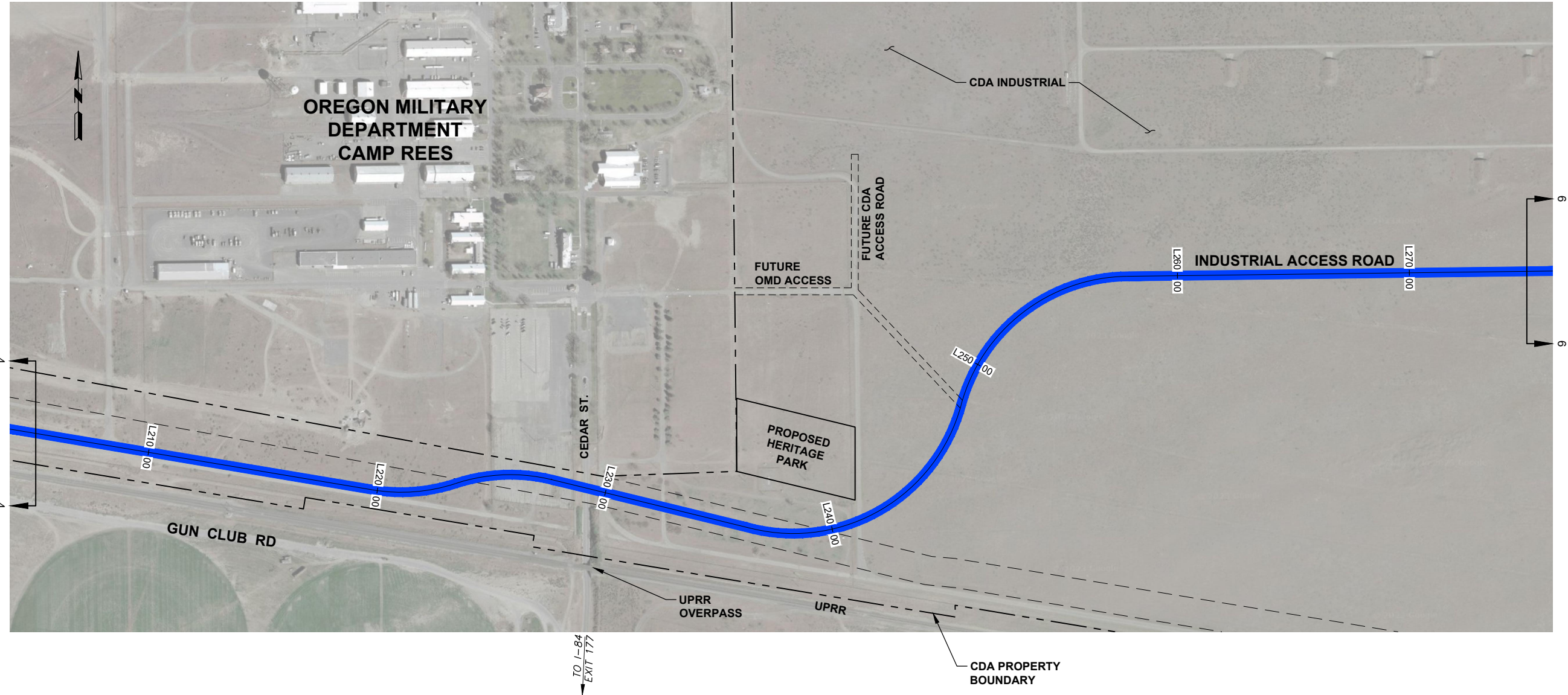
**PRELIMINARY ROADWAY ALIGNMENT  
STA L65+00 TO STA L135+00**

**FIGURE  
3**

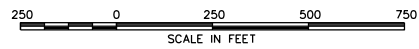
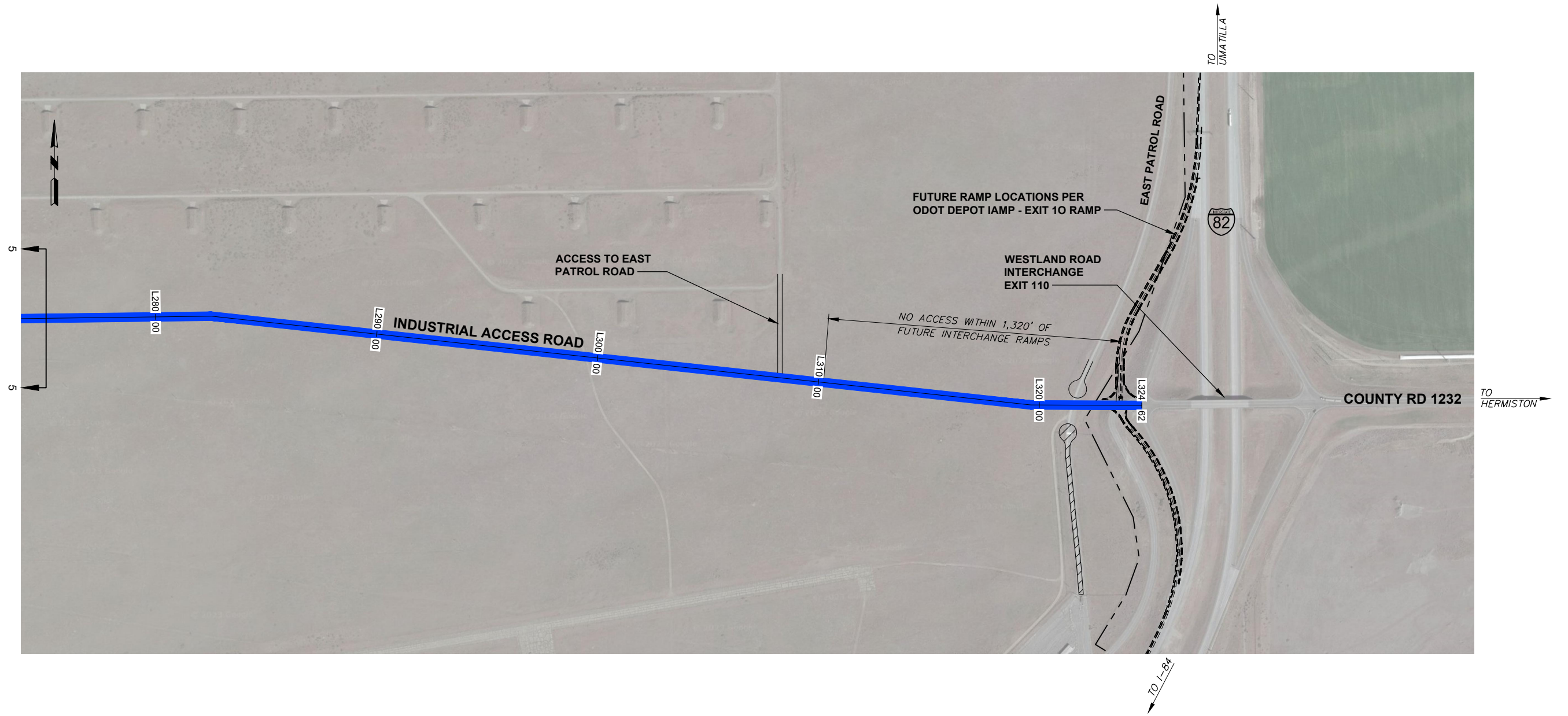
X:\Clients\Columbia Devlp Authority\98-02 Industrial Area Connector\CAD\98-02-FIG-4.dwg\_Layout1\_12/11/2023 8:56 AM\_Imurphy



	<b>COLUMBIA DEVELOPMENT AUTHORITY INDUSTRIAL AREA CONNECTOR ROAD PRE-DESIGN REPORT</b>	<b>FIGURE</b>
	<b>PRELIMINARY ROADWAY ALIGNMENT STA L135+00 TO STA 205+00</b>	<b>4</b>

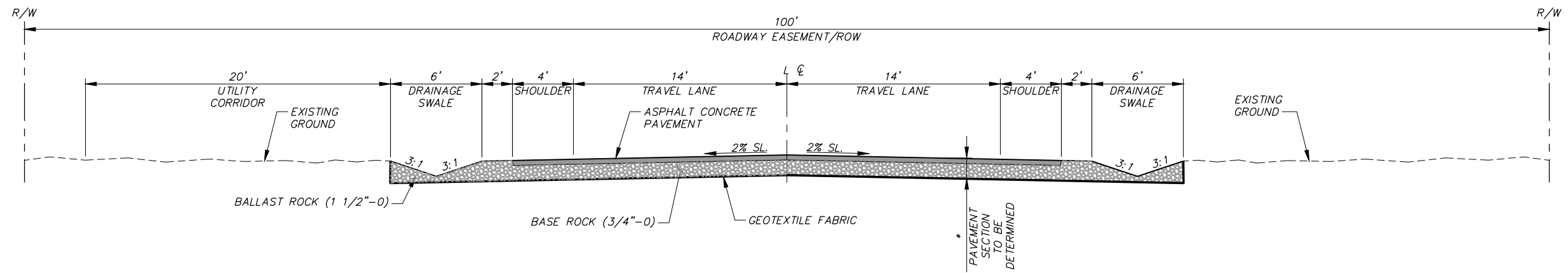


	<b>COLUMBIA DEVELOPMENT AUTHORITY INDUSTRIAL AREA CONNECTOR ROAD PRE-DESIGN REPORT</b>	<b>FIGURE 5</b>
	<b>PRELIMINARY ROADWAY ALIGNMENT STA L205+00 TO STA L275+00</b>	

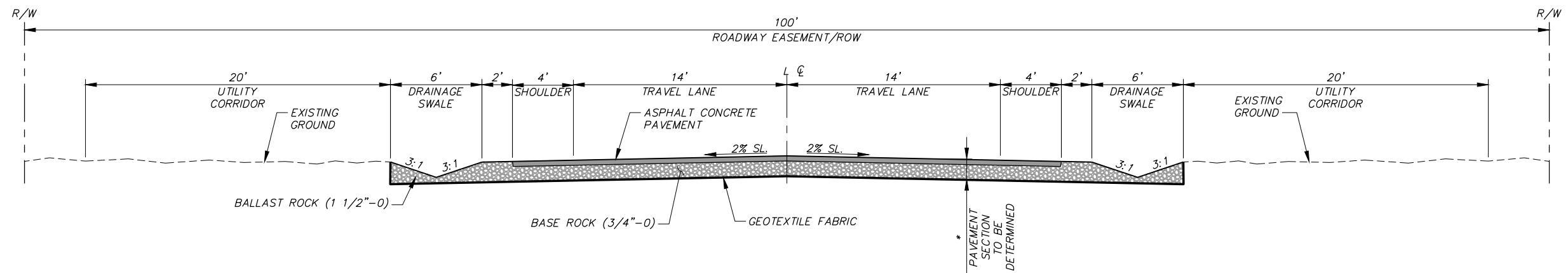


	<p>COLUMBIA DEVELOPMENT AUTHORITY INDUSTRIAL AREA CONNECTOR ROAD PRE-DESIGN REPORT</p> <p><b>PRELIMINARY ROADWAY ALIGNMENT STA L275+00 TO STA L327+00</b></p>	<p>FIGURE <b>6</b></p>
--	---	----------------------------

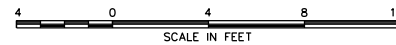
X:\Clients\Columbia Devlp Authority\98-02 Industrial Area Connector\CAD\98-02-FIG-7.dwg, Layout1, 12/11/2023 8:57 AM, Imurphy



TYPICAL SECTION  
STA L1+00 TO STA L235+00



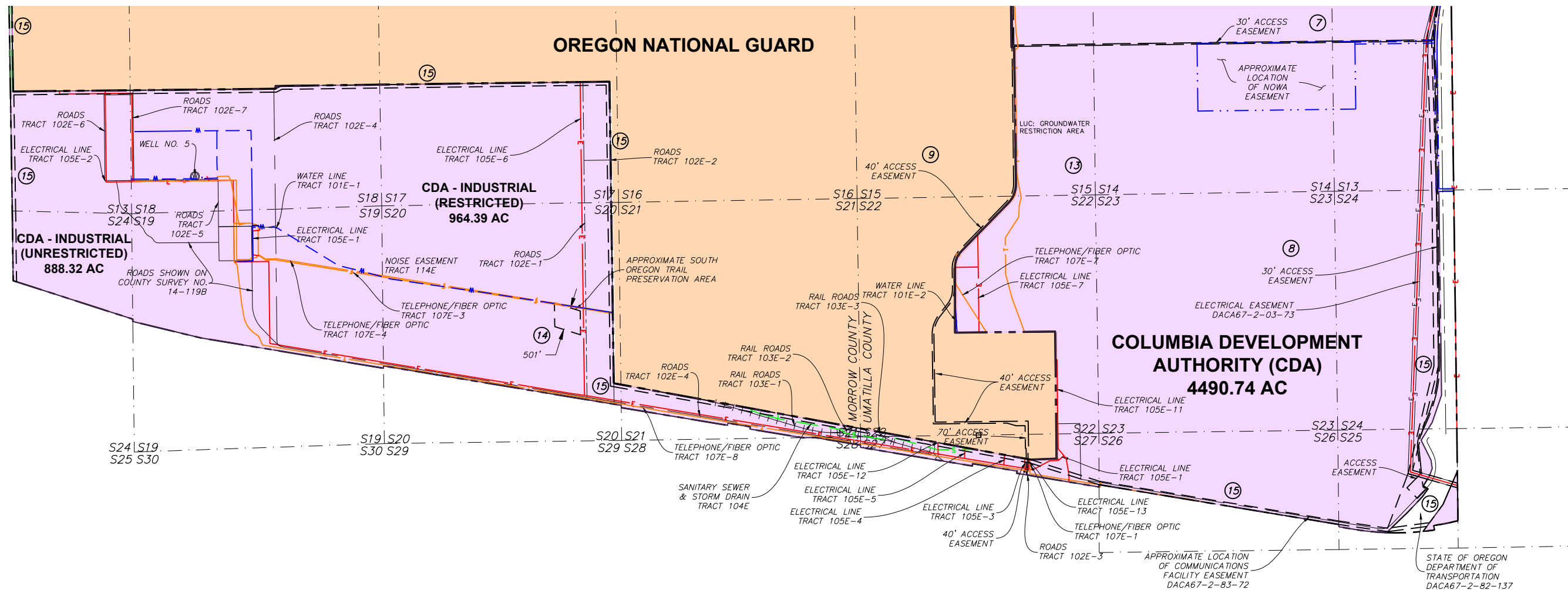
TYPICAL SECTION  
STA L235+00 TO STA L327+00



COLUMBIA DEVELOPMENT AUTHORITY  
INDUSTRIAL AREA CONNECTOR ROAD  
PRE-DESIGN REPORT  
  
PRELIMINARY ROADWAY ALIGNMENT  
TYPICAL SECTION

FIGURE  
7

OREGON NATIONAL GUARD



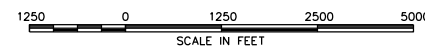
LEGEND

- CDA PARCEL 1
- CDA PARCEL 2
- CDA AGRICULTURAL PARCEL
- CTUIR PARCEL
- OREGON NATIONAL GUARD

- ROAD EASEMENT
- RAILROAD EASEMENT
- WATER LINE EASEMENT
- GAS LINE EASEMENT
- SANITARY & STORM DRAIN EASEMENT
- ELECTRICAL EASEMENT
- TELEPHONE/FIBER EASEMENT
- SECTION LINES
- PROPERTY BOUNDARY
- EASEMENT SHOWN ON COUNTY SURVEY

EASEMENTS/LAND USE AREAS

8. 30' ACCESS EASEMENT ALONG EAST PATROL ROAD THROUGH SECTIONS 13, 24, AND 25. SHOWN ON UMATILLA COUNTY SURVEY 21-065-C. PREPARED BY SEPARATE DOCUMENT.
9. VARYING WIDTH ACCESS EASEMENT FROM SOUTHERLY BOUNDARY ALONG RIM ROAD NORTH THROUGH SECTIONS 27, 22, 15, AND 10 TO THE INDUSTRIAL AREA. SHOWN ON UMATILLA COUNTY SURVEY 21-065-C. PREPARED BY SEPARATE DOCUMENT.
13. LAND USE CONTROL AREA. GROUNDWATER RESTRICTION AREA. LOCATED IN WITHIN A PORTION OF SECTIONS 14, 15, & 22. SHOWN ON UMATILLA COUNTY SURVEY 21-065-C.
14. SOUTH OREGON TRAIL PRESERVATION AREA. 501' x 600' AREA LOCATED IN SECTION 20, TOWNSHIP 4N, RANGE 27E, WM
15. PROPOSED UMATILLA ELECTRIC CO-OP EASEMENTS PER TOTH AND ASSOCIATES REQUEST 7/11/2022





**COLUMBIA DEVELOPMENT AUTHORITY  
INDUSTRIAL AREA CONNECTOR ROAD  
PRE-DESIGN REPORT**

**PRELIMINARY ROADWAY ALIGNMENT  
UTILITY AND ACCESS EASEMENTS**

**FIGURE  
8**